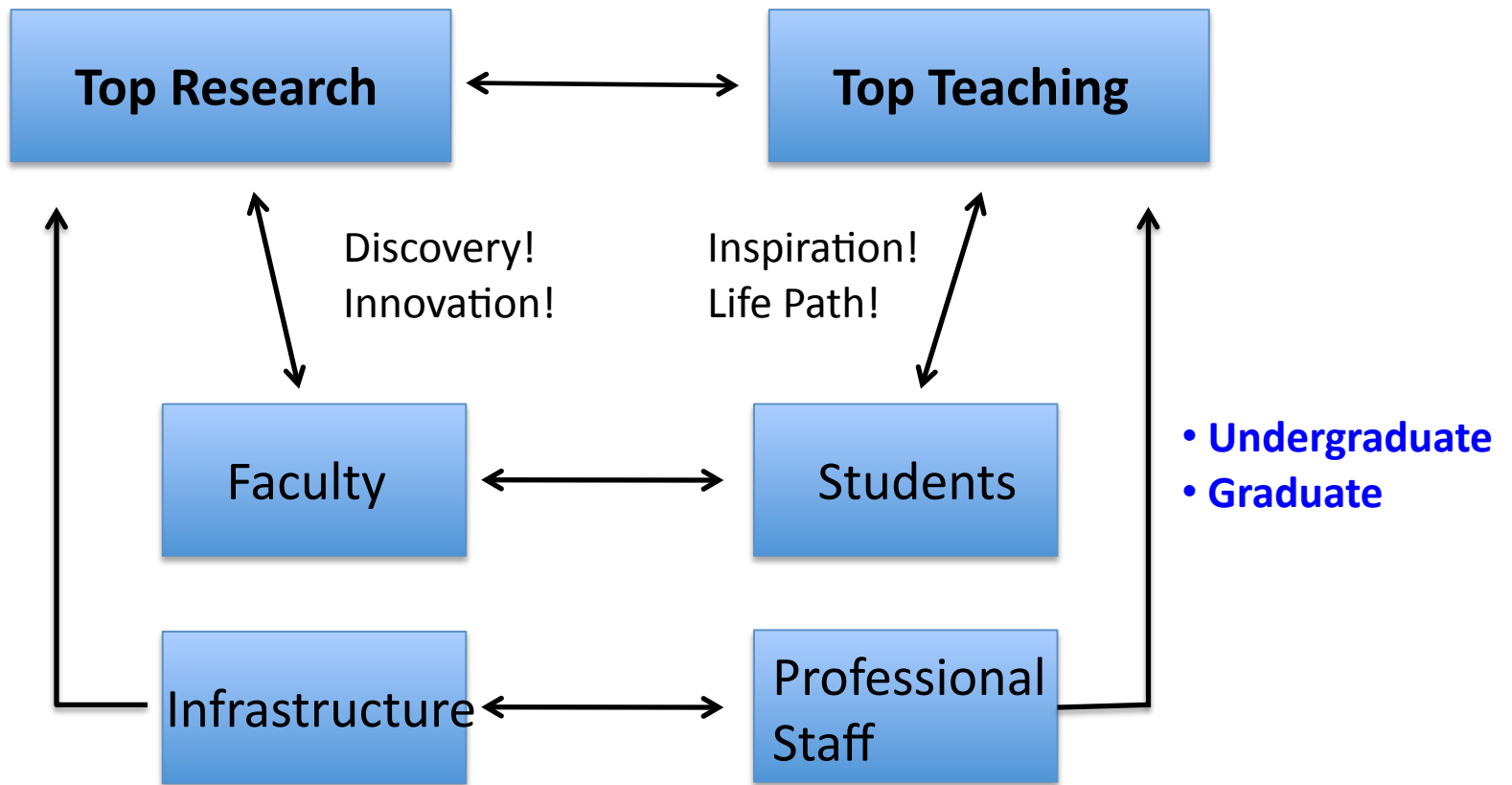


University Budget Committee

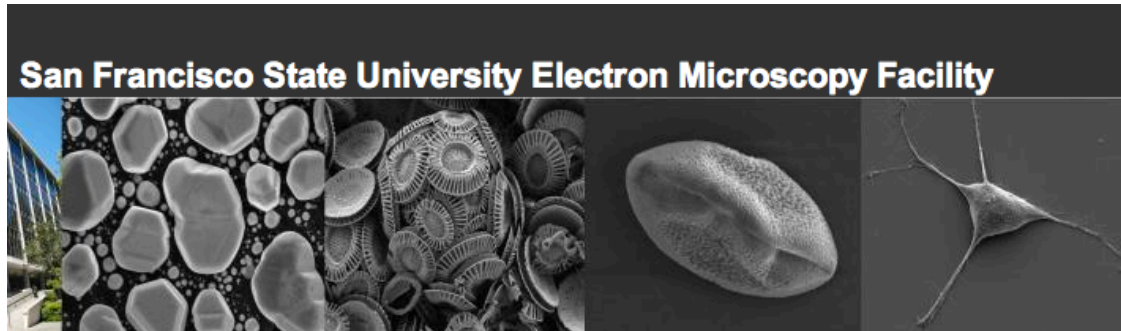
May 28, 2015

Investment in intellectual capital yields economic benefit for the university

Strategic Plan – Life of the Mind



The Electron Microscopy Facility houses state-of-the-art instrumentation to enable research and teaching at SFSU



[Electron Microscopy Facility](#)

[Laboratory Staff](#)

[New Users](#)

[Academic Rates](#)

[Non-Academic Rates](#)

[Consumables and Costs for EM Projects](#)

[Specimen Preparation](#)

[Sample Restrictions](#)

[Frequently Asked Questions](#)

Electron Microscopy Facility

The **Electron Microscopy Facility at San Francisco State** houses a Carl Zeiss **Ultra 55** Field Emission Scanning Electron Microscope (FE-SEM) that provides SFSU faculty, local universities, and industrial partners with the ability to perform cutting-edge research on naturally-occurring and fabricated nanostructures across a broad range of disciplines.

Located in Room 138 of **Hensill Hall**, the Electron Microscopy Facility (EMF) includes a fully-equipped specimen preparation laboratory for both hard and soft (biological) materials. Hensill Hall is located on the North-East corner of campus on 19th Avenue between Buckingham Way and Holloway Avenue. From the street level (3rd floor), take the elevator or stairs to the first floor. The Electron Microscopy Facility shares a suite of laboratories with the Cell and Molecular Imaging Center (CMIC), which is accessed through HH138. The Zeiss Ultra 55 **detectors** include a chamber-mounted **Everhart-Thornley detector**, an **in-lens SE detector**; an **in-lens Energy selective Backscattered electron detector (EsB[®])**, an **Angle selective Backscattered electron detector (AsB[®])**; a **scanning transmission electron detector (STEM)**, an **electron backscatter diffraction detector (EBSD)**, an **energy dispersive X-ray spectrometer (EDS)**; and a **cathodoluminescence detector (CL)**.

Director:
Dr. Clive Hayzelden

Faculty Director:
Dr. Andrew Ichimura

<http://emfimage.sfsu.edu>